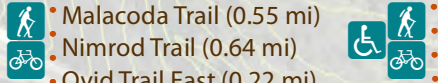
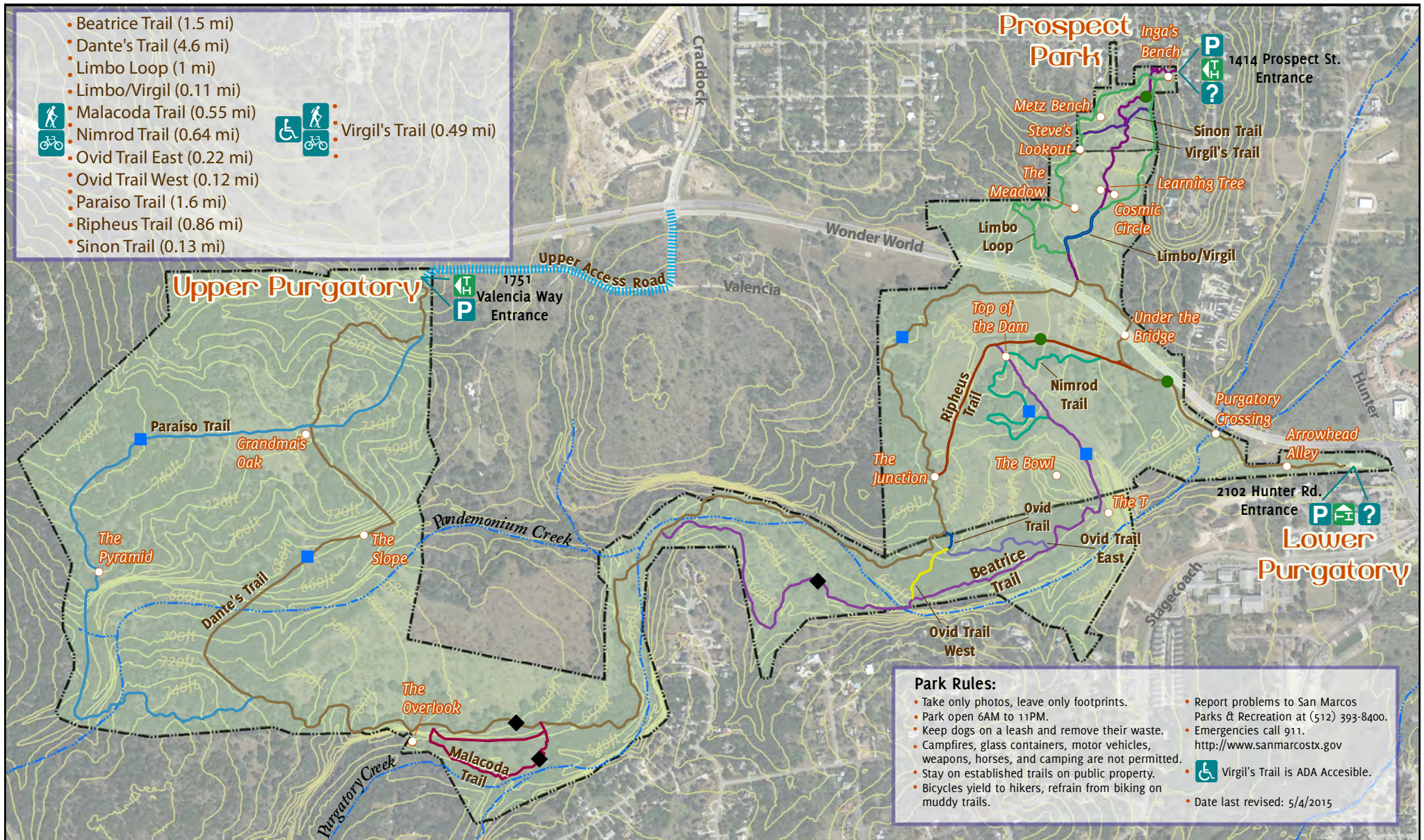


- Beatrice Trail (1.5 mi)
- Dante's Trail (4.6 mi)
- Limbo Loop (1 mi)
- Limbo/Virgil (0.11 mi)
- Malacoda Trail (0.55 mi)
- Nimrod Trail (0.64 mi)
- Ovid Trail East (0.22 mi)
- Ovid Trail West (0.12 mi)
- Paraiso Trail (1.6 mi)
- Ripheus Trail (0.86 mi)
- Sinon Trail (0.13 mi)



Virgil's Trail (0.49 mi)



- Park Rules:**
- Take only photos, leave only footprints.
 - Park open 6AM to 11PM.
 - Keep dogs on a leash and remove their waste.
 - Campfires, glass containers, motor vehicles, weapons, horses, and camping are not permitted.
 - Stay on established trails on public property.
 - Bicycles yield to hikers, refrain from biking on muddy trails.
 - Report problems to San Marcos Parks & Recreation at (512) 393-8400.
 - Emergencies call 911.
 - <http://www.sanmarcostx.gov>
 - Virgil's Trail is ADA Accessible.
 - Date last revised: 5/4/2015

Purgatory Creek

Natural Area

SMGA is a local non-profit whose mission is to create and conserve an interconnected system of parks and natural areas for our community and future generations.
<http://www.smgreenbelt.org>

This map is a collaboration between volunteers of the San Marcos Greenbelt Alliance and the City of San Marcos.
 Map Author: Katie Steele

IMBA Trail Rating

- Beginner
- Intermediate
- ◆ Advanced
- ◆◆ Expert

Trail Features

- TH Trailhead
- H Hiking Trail
- B Bicycle Trail
- P Parking Area
- ♿ Accessible/ADA
- ? Information Kiosk
- Greenspace Limits
- Point of Interest

Scale: 0 500 1,000 Feet