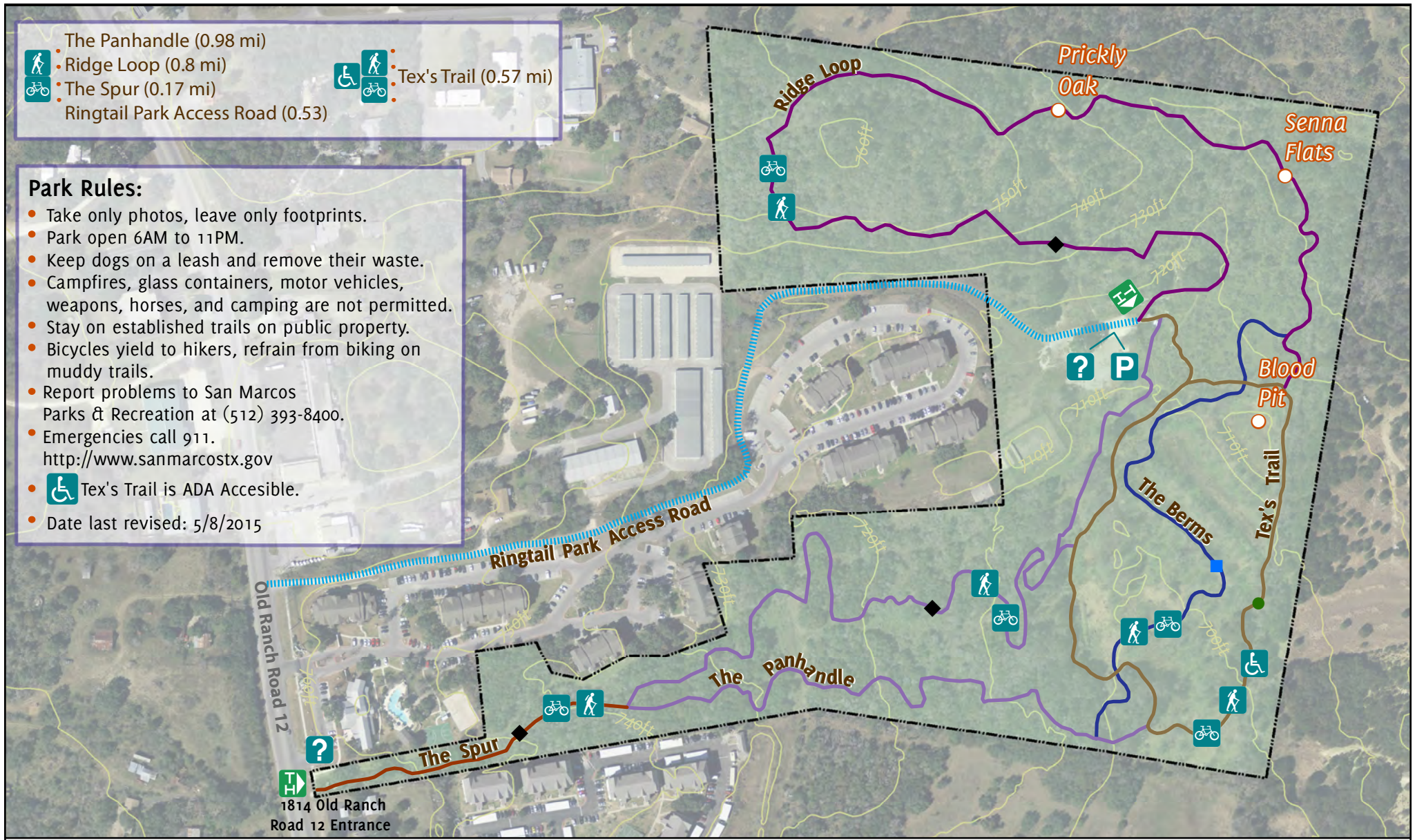


- The Panhandle (0.98 mi)
- Ridge Loop (0.8 mi)
- The Spur (0.17 mi)
- Ringtail Park Access Road (0.53)
- Tex's Trail (0.57 mi)

- Park Rules:**
- Take only photos, leave only footprints.
 - Park open 6AM to 11PM.
 - Keep dogs on a leash and remove their waste.
 - Campfires, glass containers, motor vehicles, weapons, horses, and camping are not permitted.
 - Stay on established trails on public property.
 - Bicycles yield to hikers, refrain from biking on muddy trails.
 - Report problems to San Marcos Parks & Recreation at (512) 393-8400.
 - Emergencies call 911.
 - <http://www.sanmarcostx.gov>
 - Tex's Trail is ADA Accessible.
 - Date last revised: 5/8/2015



Ringtail Ridge

Natural Area

SMGA is a local non-profit whose mission is to create and conserve an interconnected system of parks and natural areas for our community and future generations.

<http://www.smgreenbelt.org>

This map is a collaboration between volunteers of the San Marcos Greenbelt Alliance and the City of San Marcos.

Map Author: Katie Steele

IMBA Trail Rating

- Beginner
- Intermediate
- Advanced
- Expert

Trail Features

- Trailhead
- Hiking Trail
- Bicycle Trail
- Parking Area
- Accessible/ADA
- Information Kiosk
- Greenspace Limits
- Point of Interest

0 100 200 Feet